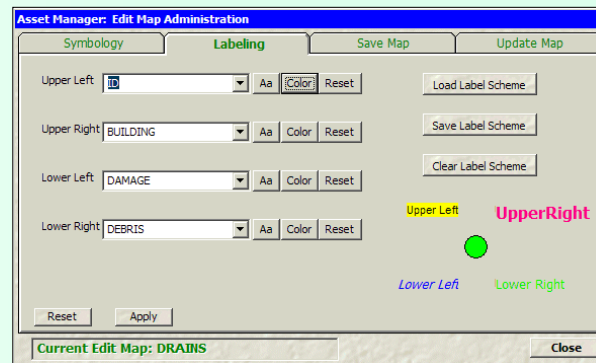
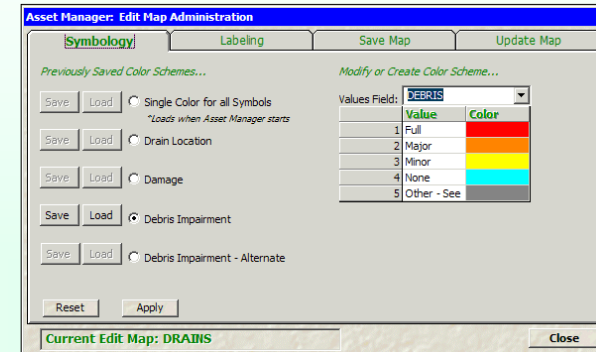


**Map-Based Management Software**  
A simple, low cost solution.

- \* Organize Map-Based Assets in One Place
- \* Eliminate Paper Map Sheets and Books
- \* Keep Your Map Data Current
- \* Create Maps and Reports on the Fly
- \* Record and Track Work History
- \* Accurately Calculate Budgets

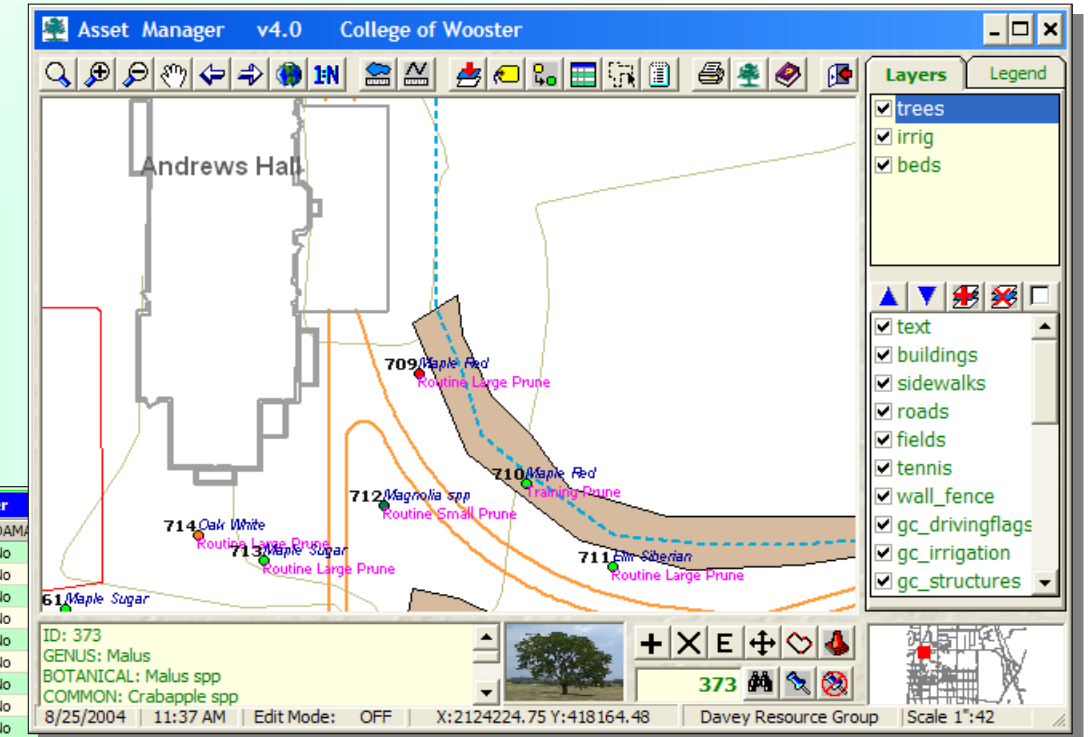


Hardcopy map output is worry-free with the built in 8.5x11 print preview. Legend, key map, title, and scale are created for you.

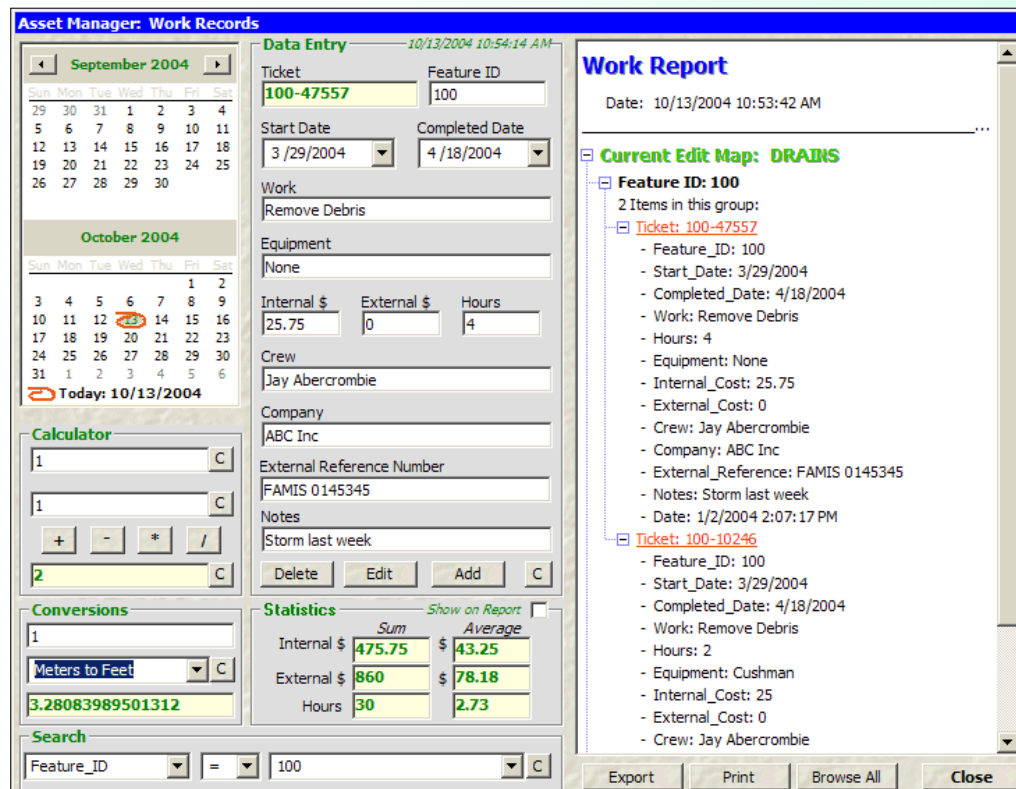


Manage a wide variety of assets:

- Drains
- Teledata Paths
- Planting Beds
- Trees
- Greens
- Fairways
- Bunkers
- Valves
- Hydrants
- Turf Areas
- Irrigation Lines

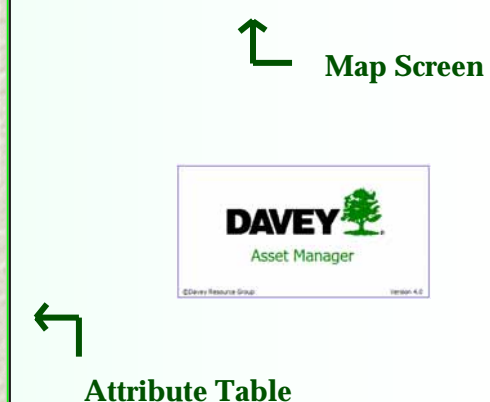
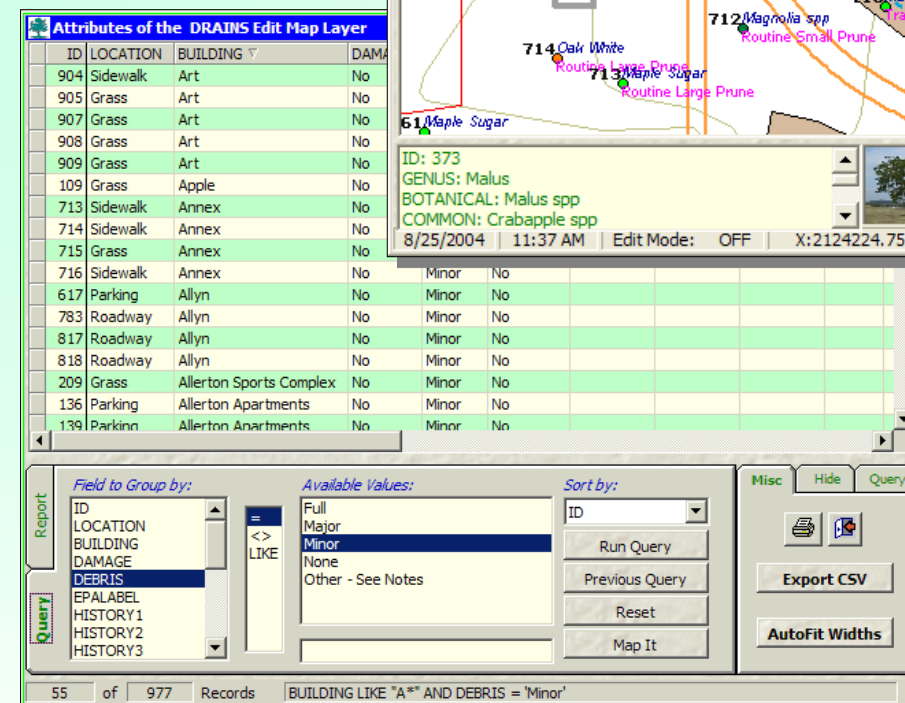


Asset Manager also allows users to color and label features based on attribute fields in the asset database. The images at right show drain points colored by the debris load field and also labeled with ID, building, damage, and EPA fields.



Track work information quickly and simply. Using the work tool, select an asset on the map screen to call up the **work history window**. Monitor hours, internal and external costs for each feature.

Enter an external reference number to comply with larger work order software run by your organization. Utilize the calendar, calculator, conversion, and search tools provided on the same screen. Work records can be printed as displayed on the work screen.



Would such a system work for you? Consider these questions:

- Do you need to manage assets that are not easily located with your current systems?
- Does your office have desktop computers and personnel to use and maintain an inventory?

If you can answer "yes" to these questions, a map based management system may work well for your organization.

Contact us for more information:  
Davey Resource Group  
1500 N. Mantua St.  
Kent, OH 44240-5193  
1-800-828-8312  
gis@davey.com  
www.davey.com/software

Asset Manager software uses Geographic Information Systems technology to display and manage geographically referenced inventory data and is specifically designed for ease of use with four primary interfaces:

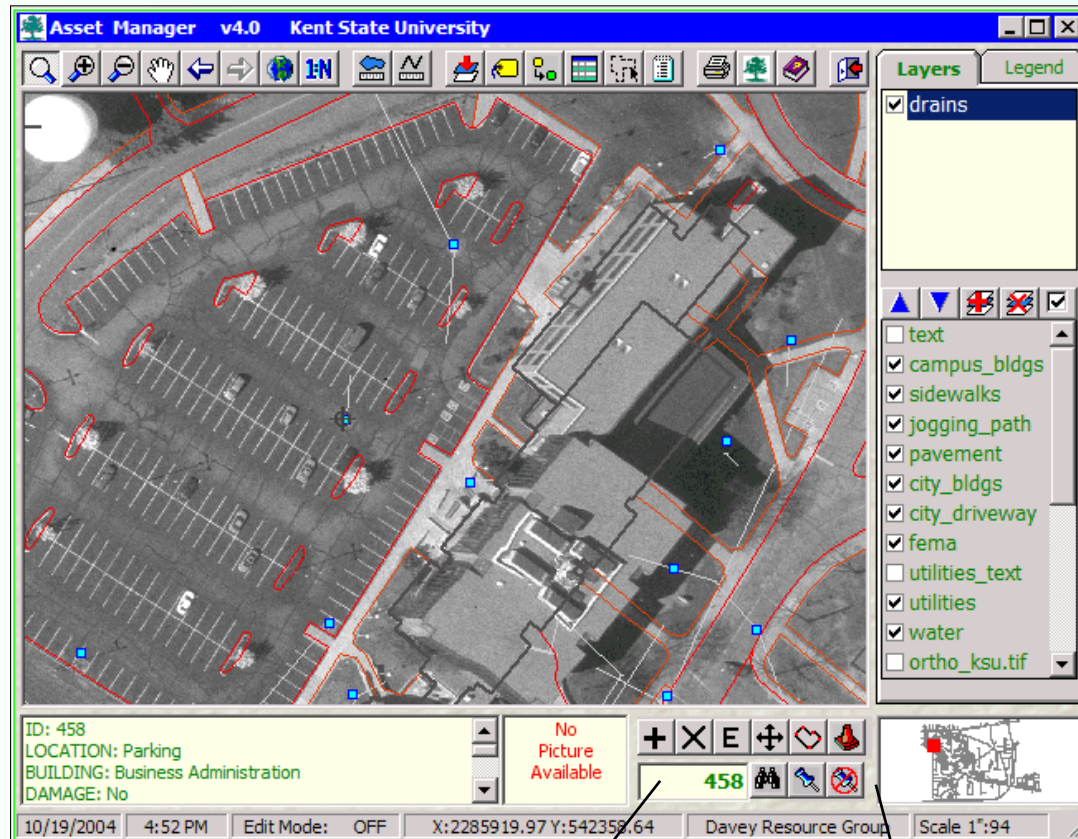
- map screen
- attribute table
- report window
- work history window

Asset Manager runs on virtually any Windows 98 or higher computer.

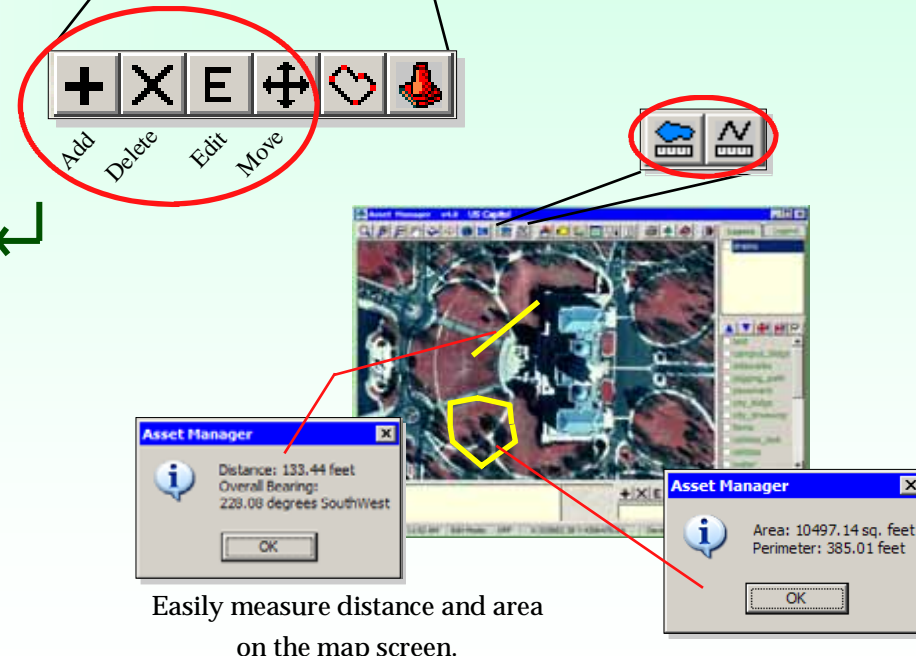
**Map-Based Management Software**  
*A simple, low cost solution.*

On the **map screen**, point, line and polygon features represent assets on the ground. A variety of base maps derived from CAD files, other GIS systems, hard copy scans, and aerial photos can be used underneath these features. Asset data are stored in ESRI shapefile format for wide ranging compatibility.

The map screen provides basic navigation functions to zoom, pan, label, and identify assets. For convenience, attributes and associated photos are displayed in a small window below the map when interacting with a feature.



Assets are manipulated directly on the map with add, delete, move, and edit functions. A tailored input form is used to add and edit feature attributes. Photos can be attached to each feature as well.



Easily measure distance and area on the map screen.

**Asset Manager: Attribute Input Form**

Total Records: 977

Record ID Number: 467

X / Area / Length: 2285856.501

Y / Perimeter: 542114.87

Time: 08:14:13

Date: 2004-06-07

Staff: Davey Resource

Notes: [Text Area]

Buttons: Load Last, Reset, Cancel, OK

**Attributes of the DRAINS Edit Map Layer**

ID	LOCATION	BUILDING	DAMAGE	DEBRIS	EPALABEL	HISTORY1	HISTORY2	HISTORY3	MIS
904	Sidewalk	Art	No	Minor	No				
905	Grass	Art	No	Minor	No				
907	Grass	Art	No	Minor	No				
908	Grass	Art	No	Minor	No				
909	Grass	Art	No	Minor	No				
109	Grass	Apple	No	Minor	No				
713	Sidewalk	Annex	No	Minor	No				
714	Sidewalk	Annex	No	Minor	No				
715	Grass	Annex	No	Minor	No				
716	Sidewalk	Annex	No	Minor	No				
617	Parking	Allyn	No	Minor	No				
783	Roadway	Allyn	No	Minor	No				
817	Roadway	Allyn	No	Minor	No				
818	Roadway	Allyn	No	Minor	No				
209	Grass	Allerton Sports Complex	No	Minor	No				
136	Parking	Allerton Apartments	No	Minor	No				
139	Parking	Allerton Apartments	No	Minor	No				

Field to Group by: ID, LOCATION, BUILDING, DAMAGE, DEBRIS, EPALABEL, HISTORY1, HISTORY2, HISTORY3

Available Values: Full, Major, Minor, None, Other - See Notes

Sort by: ID

Buttons: Run Query, Previous Query, Reset, Map It, Export CSV, AutoFit Widths

55 of 977 Records | BUILDING LIKE "A\*" AND DEBRIS = 'Minor'

In the **attribute table**, records can be sorted alphabetically and queries built with user-specified criteria. The table can be printed or exported to a comma delimited text file, which can be easily imported to spreadsheet and database applications.

Nested queries are implemented with the tools below the table. The user selects a table field and values specific to that field. Basic wildcard queries are supported.

Example:  
Building LIKE 'A\*' AND Debris = 'Minor'

This query returns drain records with buildings that start with the letter 'A' and have 'Minor' debris loads associated with them.

Attribute table records can be organized in reports using the tools on the **report window** shown at right. The user selects a grouping field, verifies the available values, and then selects various fields to list with each record on the report.

The report contents are displayed on the fly for instant review and modifications. Title, sub-title, date, optional notes, and footer can be customized to taste. Clicking the print button yields hardcopy output identical to the display.

**Attributes of the DRAINS Edit Map Layer**

**College of Wooster**

Drain Impairment

Date: 10/13/2004 10:44:37 AM

Notes: John: Fix these drains ASAP

Report Components:

Title: College of Wooster

SubTitle: Drain Impairment

Date: 10/13/2004 10:44:37 AM

Notes: John: Fix these drains ASAP

Footer: Asset Manager

Field to Group by: ID, LOCATION, BUILDING, DAMAGE, DEBRIS, EPALABEL, HISTORY1, HISTORY2, HISTORY3

Available Values: Administrative Building, Allerton Apartments, Allerton Sports Complex, Allyn, Annex, Apple, Art

Fields to List: LOCATION, BUILDING, DAMAGE, DEBRIS, EPALABEL, HISTORY1

Buttons: Run, Reset, Export CSV, AutoFit Widths

55 of 977 Records | BUILDING LIKE "A\*" AND DEBRIS = 'Minor'